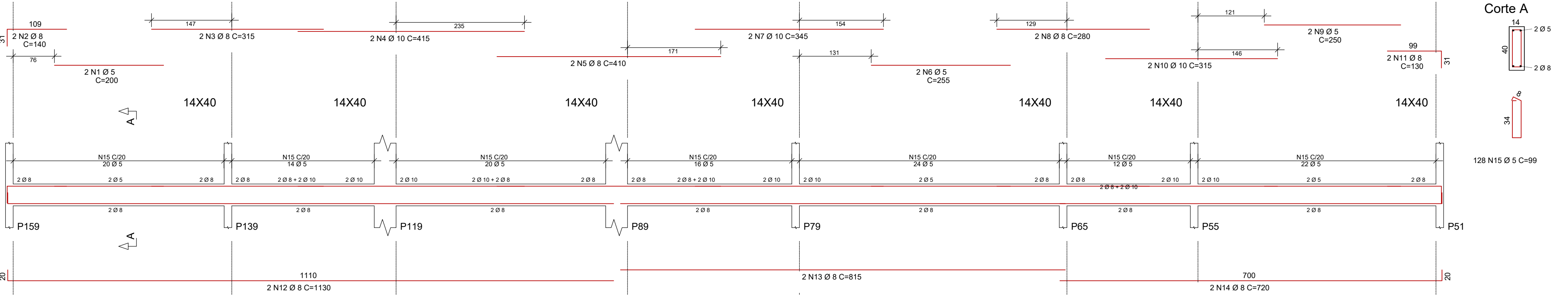


V148



V148	AÇO	POS	BIT (mm)	QUANT	COMPRIMENTO	
					UNIT	TOTAL
					(cm)	(cm)
	60B	1	5	2	200	400
	50A	2	8	2	140	280
	50A	3	8	2	315	630
	40A	4	10	2	415	830
	50A	5	8	2	410	820
	60B	6	5	2	255	510
	50A	7	10	2	345	690
	50A	8	8	2	280	560
	60B	9	5	2	250	500
	50A	10	10	2	315	630
	50A	11	8	2	130	260
	50A	12	8	2	1130	2260
	50A	13	8	2	815	1630
	50A	14	8	2	720	1440
	60B	15	5	128	99	12672

50A	1	8	2	210	420
50A	2	10	2	460	920
50A	3	8	2	225	450
50A	4	8	2	775	1550
60B	5	5	36	99	3564

50A	1	10	2	530	1060
50A	2	8	2	460	920
60B	3	5	21	99	2079

60B	1	5	2	220	440
50A	2	8	2	145	290
50A	3	10	2	190	380
50A	4	8	2	462	924
60B	5	5	21	99	2079

60B	1	5	2	200	400
50A	2	8	2	140	280
50A	3	10	2	725	1450
50A	4	8	2	1000	2000
60B	5	5	2	275	550
50A	6	8	2	1155	2310
50A	7	8	2	1075	2150
60B	8	5	108	99	10692

50A	1	10	2	530	1060
50A	2	8	2	460	920
60B	3	5	21	99	2079

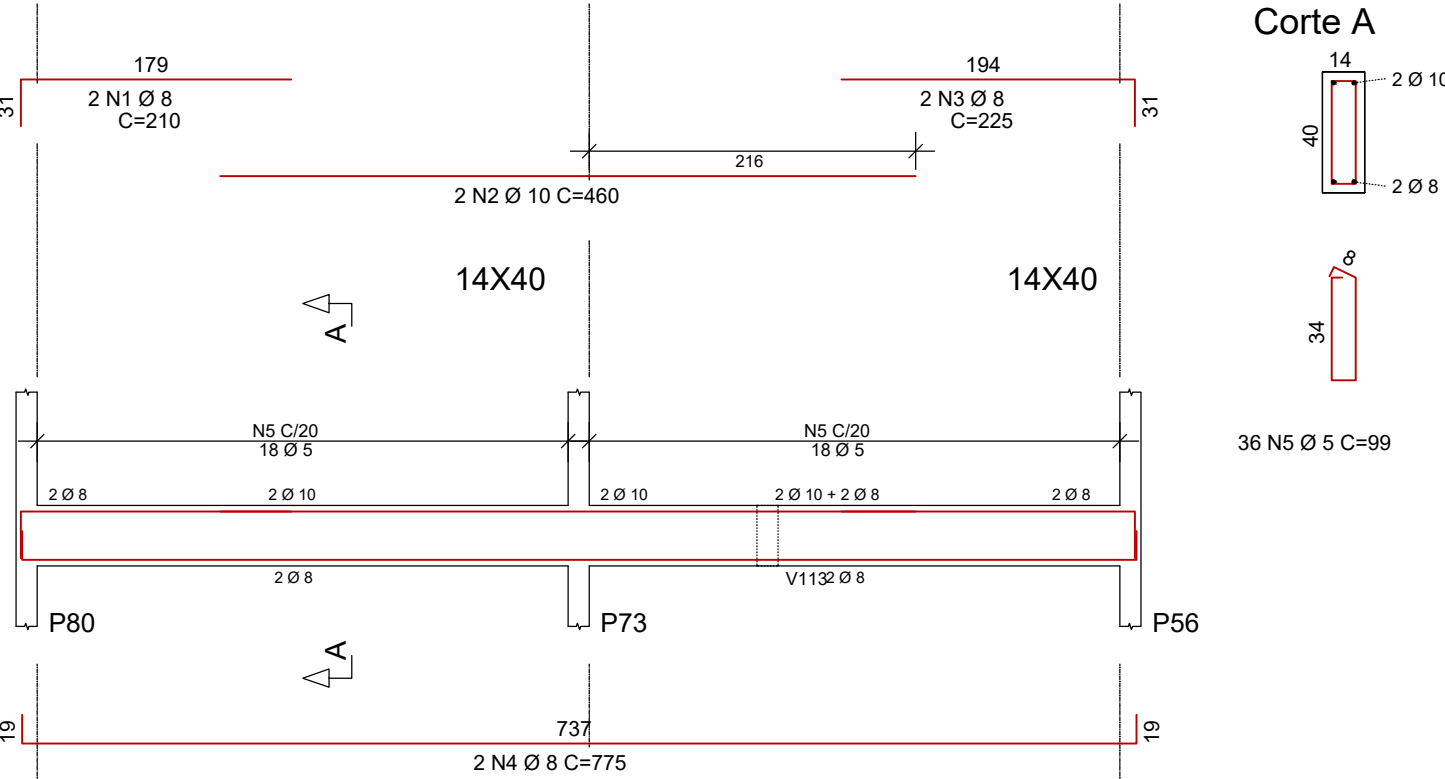
60B	1	5	2	220	440
50A	2	8	2	145	290
50A	3	10	2	190	380
50A	4	8	2	462	924
60B	5	5	21	99	2079

50A	1	10	2	530	1060
50A	2	8	2	460	920
60B	3	5	21	99	2079

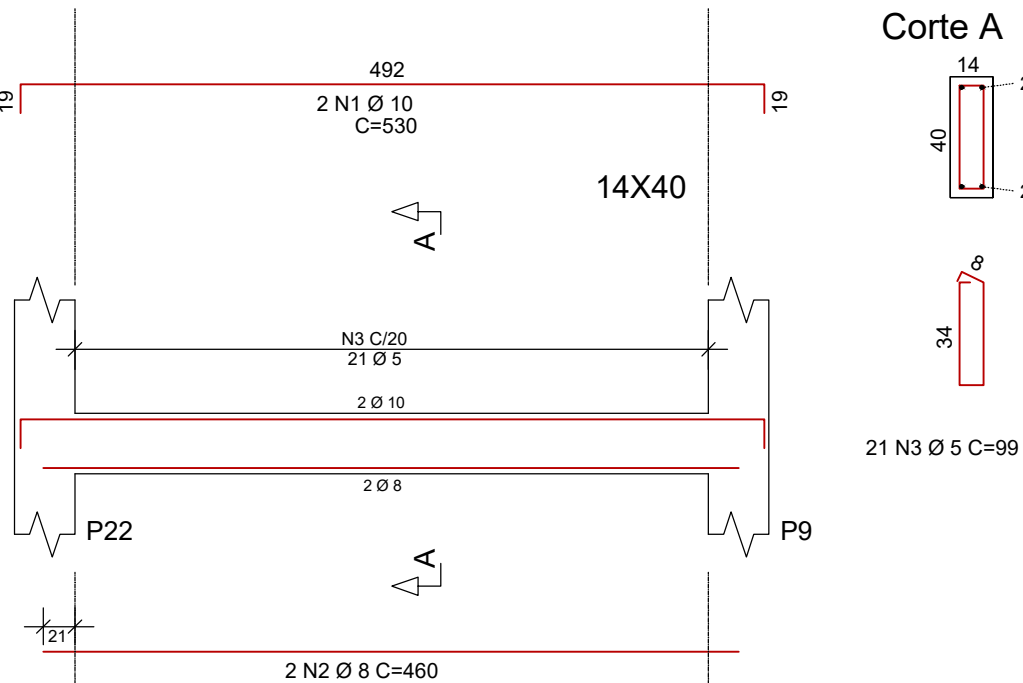
RESUMO AÇO CA 50-60			
AÇO	BIT (mm)	COMPR (m)	PESO (kg)
60B	5	406	62
50A	8	222	88
50A	10	85	52
Peso Total 60B =			62 kg
Peso Total 50A =			140 kg

Eixo Faces  
Volume de concreto de VIGAS (m3) 4.4 4.1  
Taxa de armadura (kg/m3) 46.5 49.3

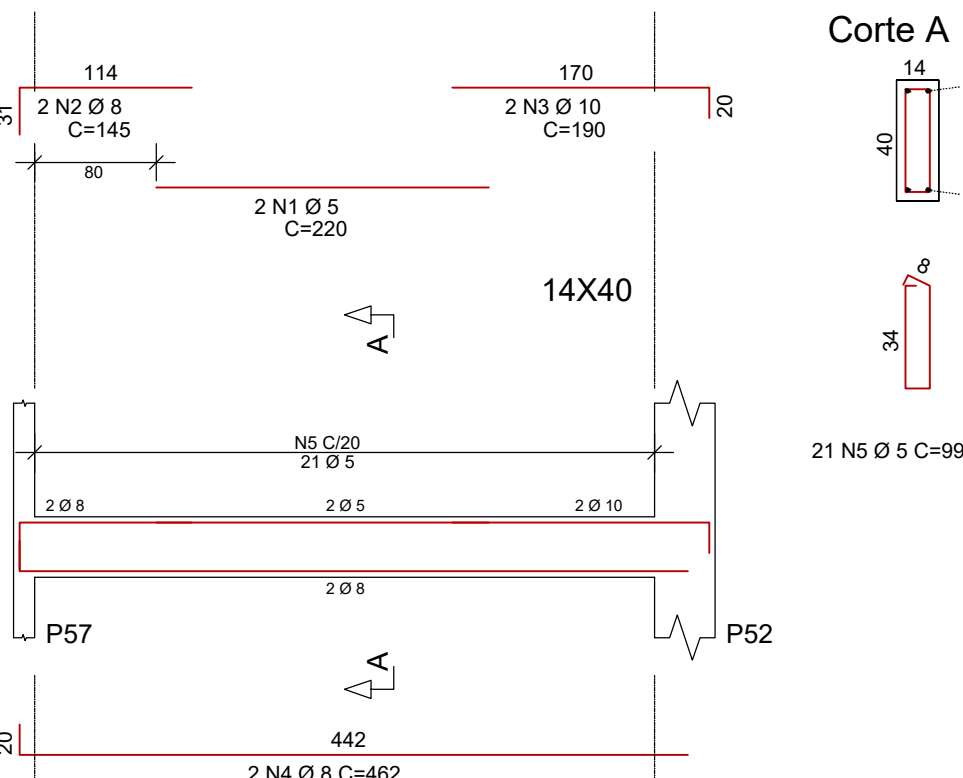
V149



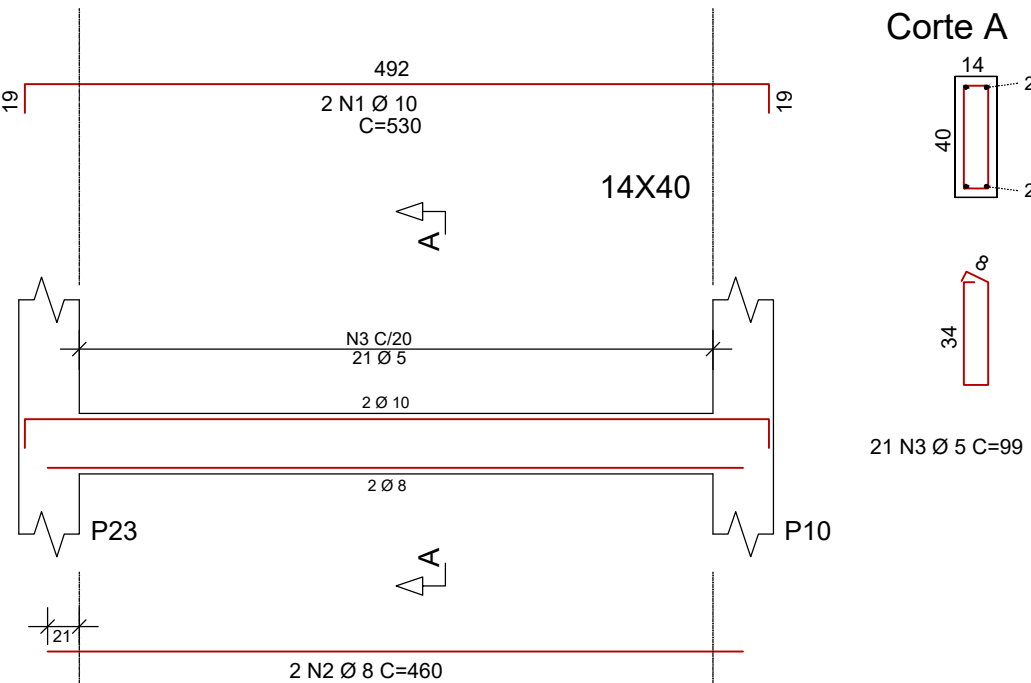
V150



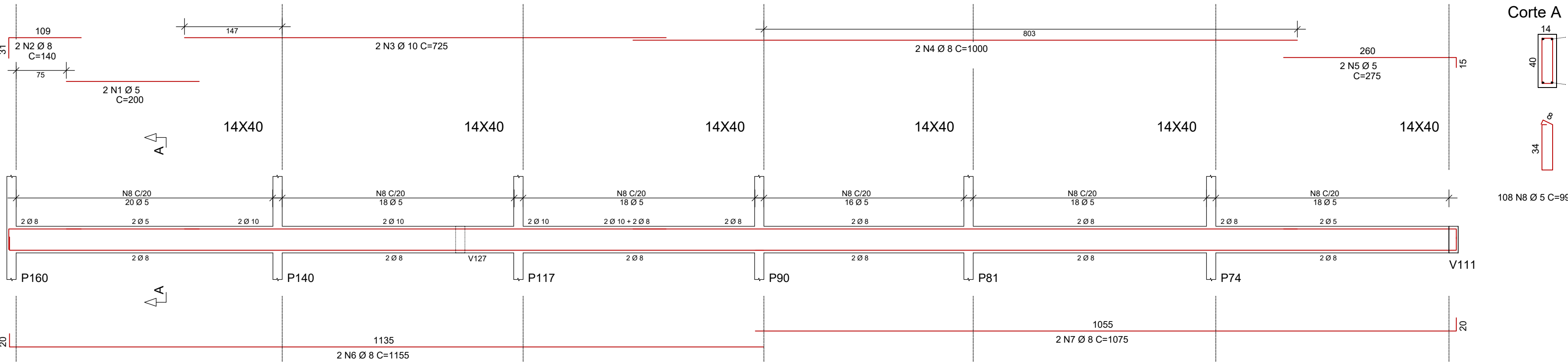
V151



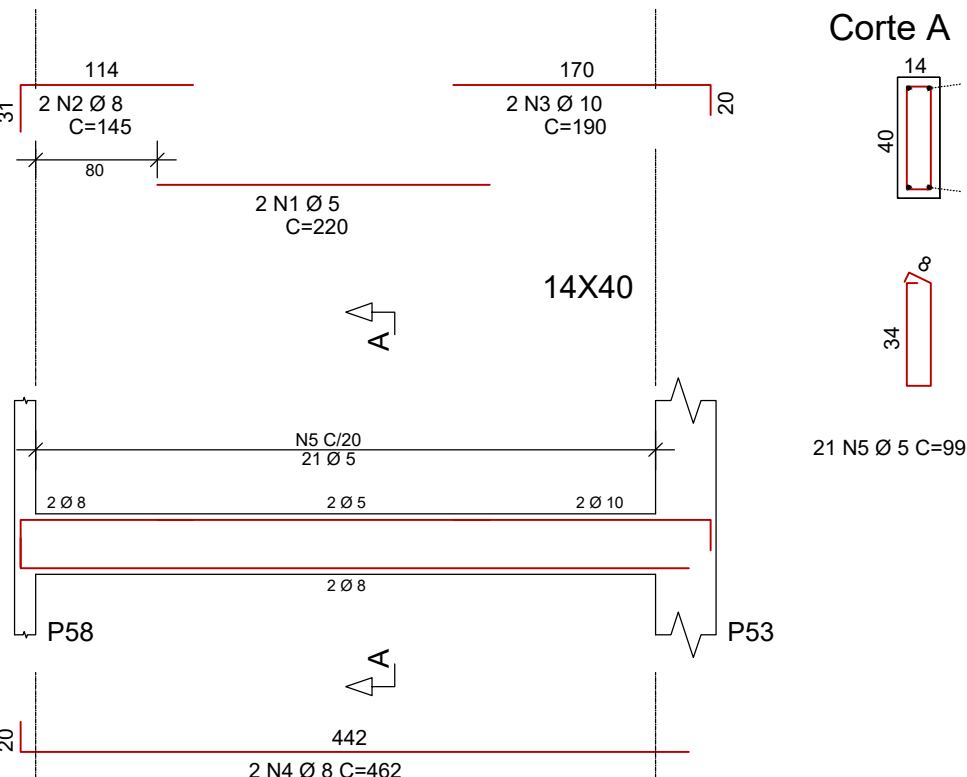
V153



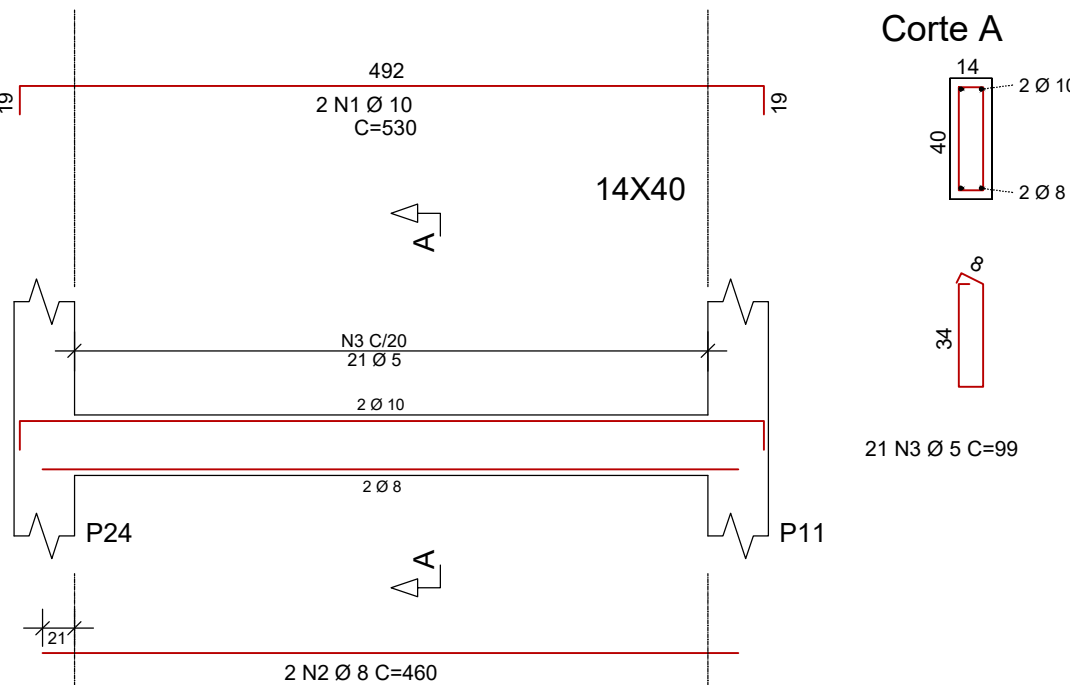
V152



V154



V155



ESPAÇO RESERVADO PARA PROJEITURA:

PROJETO:  
TERMINAL RODOVIÁRIO DE VÁRZEA GRANDE - MT

CONTRATO: O.S Nº: 001/2021

Nº: XXXX  
DATA: 02  
REVISÃO Nº: 02  
DATA:

ESCALA INDICADA:  
ESCALA INDICADA NO PROJETO  
CONTEUDO:  
UNIDADE: cm

- DETALHAMENTO DE VIGAS BALDRAME

NOME DO CLIENTE:



AUTOR DO PROJETO:

RESPONSÁVEL TÉCNICO DO PROJETO:

RRT PROJETO:

RRT DE EXECUÇÃO:

CONFIGURAÇÃO DE PLOTAGEM:

☐ MODELO PMC

☐ ARQUIVO EM ANEXO

FRANCHA: